

**ELEC-TRON, INC.**

“Your Source with the Right Connections”

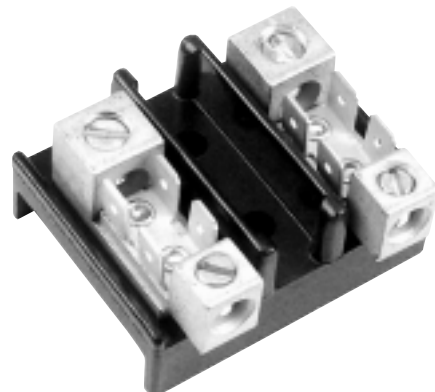
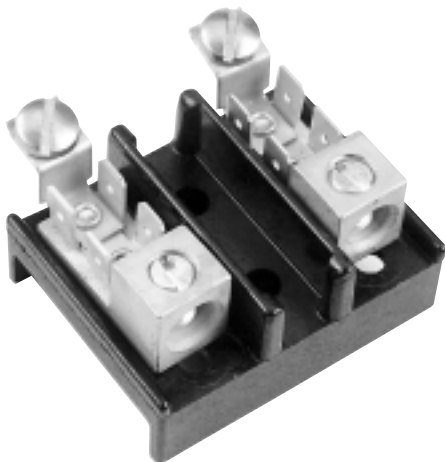
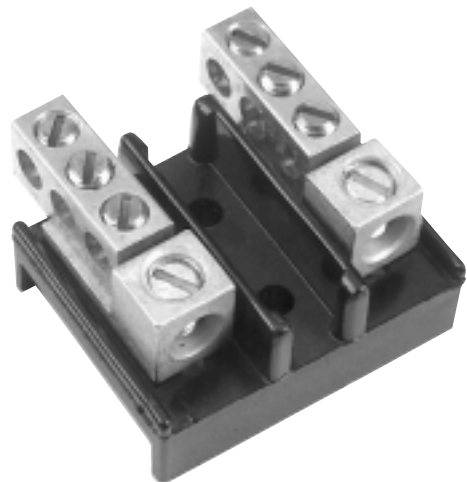
# **POWER TERMINAL BLOCKS**

## **EB Series Power Terminal Blocks**

The EB Series two-pole power blocks provide line connectors ranging from screw terminals to lugs for #1/0 conductors.

These input terminals are coupled with various combinations of multiple quick-connect tabs and/or binding screw or pressure screw load connectors. You have nearly 100 models from which to choose, so one will be just right for you.

The line connectors range from #1/0 to 18 AWG.



# ELEC-TRON, INC.

“Your Source with the Right Connections”

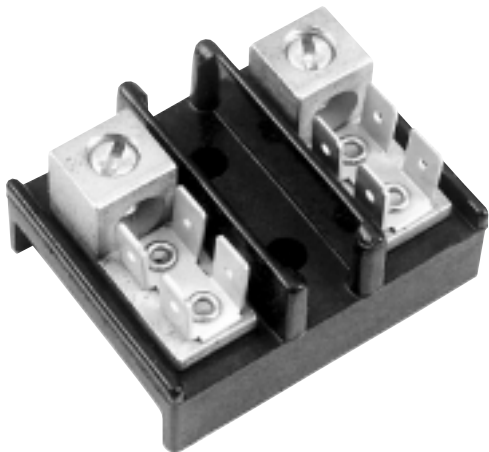
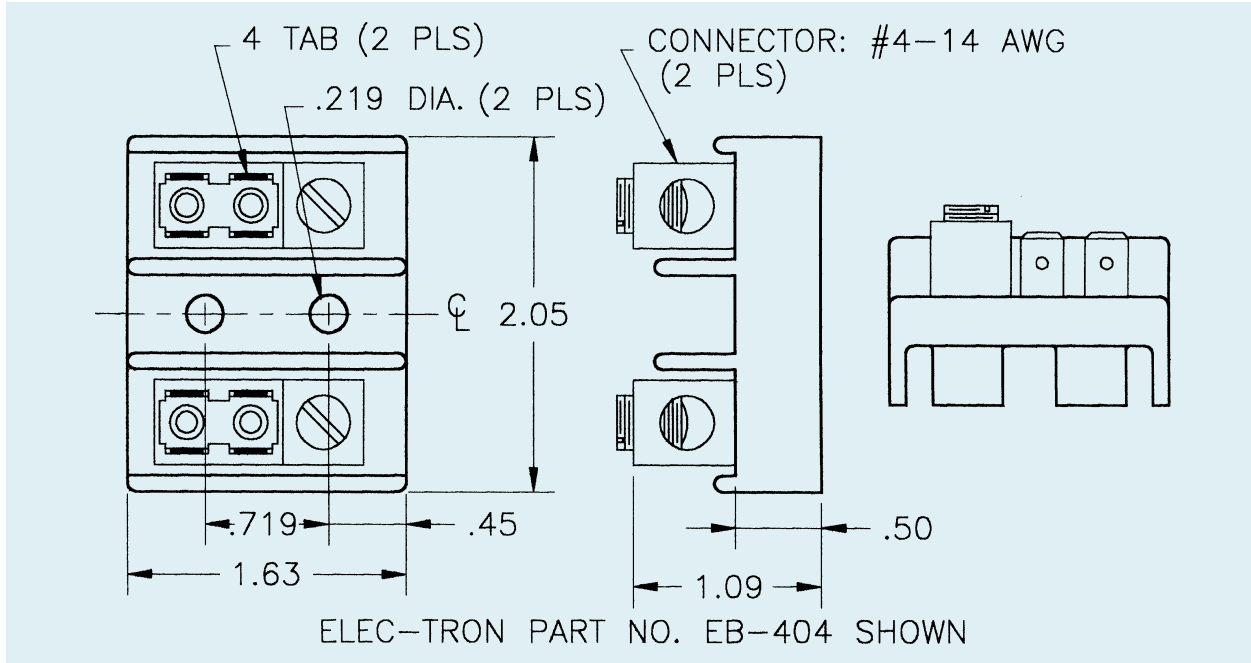


Catalog Number	Line Connections	Load Connections
EB-102	6-8 AWG	.250 x .032 Quick Connect 2 Tabs
EB-103	6-8 AWG	.250 x .032 Quick Connect 3 Tabs
EB-104	6-8 AWG	.250 x .032 Quick Connect 4 Tabs
EB-105	6-8 AWG	.250 x .032 Quick Connect 5 Tabs
EB-106	6-8 AWG	.250 x .032 Quick Connect 6 Tabs
EB-109	6-8 AWG	#10 Screw Terminal Plus .250 x .032 Quick Connect 2 Tabs
EB-110	6-8 AWG	#10 Screw Terminal Plus .250 x .032 Quick Connect 2 Tabs
EB-112	6-8 AWG	#10 Teeter Terminal
EB-113	6-8 AWG	#10 Screw Terminal Plus .250 x .032 Quick Connect 2 Tabs
EB-114	6-8 AWG	#10 Screw Terminal
EB-115	6-8 AWG	#10 Screw Terminal Plus .250 x .032 Quick Connect 2 Tabs

Catalog Number	Line Connections	Load Connections
EB-200	2/0-14 AWG CU or AL	2/0-14 AWG CU or AL

# ELEC-TRON, INC.

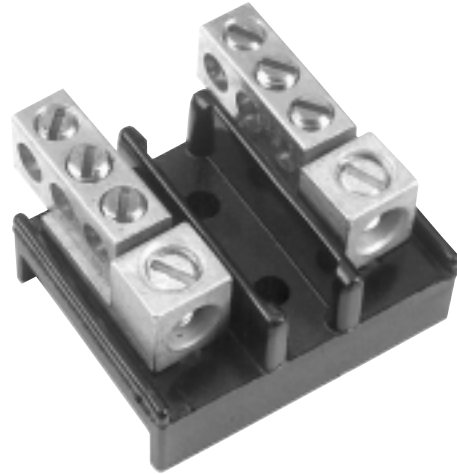
“Your Source with the Right Connections”



Catalog Number	Line Connections	Load Connections
EB-304	4-14 AWG CU or AL	.250 x .032 Quick Connect 4 Tabs
EB-404	2-14 AWG CU or AL	.250 x .032 Quick Connect 4 Tabs
EB-504	1/0-14 AWG CU or AL	.250 x .032 Quick Connect 4 Tabs
EB-305	4-14 AWG CU or AL	.250 x .032 Quick Connect 5 Tabs
EB-405	2-14 AWG CU or AL	.250 x .032 Quick Connect 5 Tabs
EB-505	1/0-14 AWG CU or AL	.250 x .032 Quick Connect 5 Tabs
EB-306	4-14 AWG CU or AL	.250 x .032 Quick Connect 6 Tabs
EB-406	2-14 AWG CU or AL	.250 x .032 Quick Connect 6 Tabs
EB-506	1/0-14 AWG CU or AL	.250 x .032 Quick Connect 6 Tabs
EB-407	2-14 AWG CU or AL	.250 x .032 Quick Connect 8 Tabs
EB-507	1/0-14 AWG CU or AL	.250 x .032 Quick Connect 8 Tabs

# ELEC-TRON, INC.

“Your Source with the Right Connections”

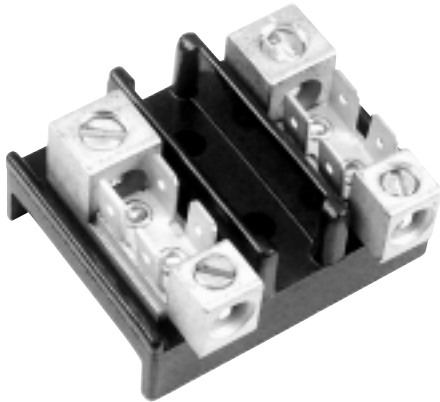


Catalog Number	Line Connections	Load Connections
EB-309	4-14 AWG CU or AL	#10 Screw Terminal Plus .250 x .032 Quick Connect 2 Tabs
EB-409	2-14 AWG CU or AL	#10 Screw Terminal Plus .250 x .032 Quick Connect 2 Tabs
EB-509	1/0-14 AWG CU or AL	#10 Screw Terminal Plus .250 x .032 Quick Connect 2 Tabs
EB-310	4-14 AWG CU or AL	#10 Screw Terminal Plus .250 x .032 Quick Connect 3 Tabs
EB-410	2-14 AWG CU or AL	#10 Screw Terminal Plus .250 x .032 Quick Connect 3 Tabs
EB-510	1/0-14 AWG CU or AL	#10 Screw Terminal Plus .250 x .032 Quick Connect 3 Tabs
EB-311	4-14 AWG CU or AL	#10 Screw Terminal Plus .250 x .032 Quick Connect 4 Tabs
EB-411	2-14 AWG CU or AL	#10 Screw Terminal Plus .250 x .032 Quick Connect 4 Tabs
EB-511	1/0-14 AWG CU or AL	#10 Screw Terminal Plus .250 x .032 Quick Connect 4 Tabs

Catalog Number	Line Connections	Load Connections
EB-316	4-14 AWG CU or AL	4-14 AWG, CU or AL, 2 Hole Connector
EB-416	2-14 AWG CU or AL	4-14 AWG, CU or AL, 2 Hole Connector
EB-516	1/0-14 AWG CU or AL	4-14 AWG, CU or AL, 2 Hole Connector
EB-317	4-14 AWG CU or AL	4-14 AWG, CU or AL, 3 Hole Connector
EB-417	2-14 AWG CU or AL	4-14 AWG, CU or AL, 3 Hole Connector
EB-517	1/0-14 AWG CU or AL	4-14 AWG, CU or AL, 3 Hole Connector
EB-418	2-14 AWG CU or AL	4-14 AWG, CU or AL, 4 Hole Connector
EB-518	1/0-14 AWG CU or AL	4-14 AWG, CU or AL, 4 Hole Connector

# ELEC-TRON, INC.

“Your Source with the Right Connections”



Catalog Number	Line Connections	Load Connections
EB-319	4-14 AWG CU or AL	4-14 AWG, CU or AL, Connector
EB-419	2-14 AWG CU or AL	4-14 AWG, CU or AL, Connector
EB-519	1/0-14 AWG CU or AL	4-14 AWG, CU or AL, Connector
EB-320	4-14 AWG CU or AL	4-14 AWG, CU or AL, Connector Plus .250 x .032 Quick Connect, 2 Tab
EB-420	2-14 AWG CU or AL	4-14 AWG, CU or AL, Connector Plus .250 x .032 Quick Connect, 2 Tab
EB-520	1/0-14 AWG CU or AL	4-14 AWG, CU or AL, Connector Plus .250 x .032 Quick Connect, 2 Tab
EB-321	4-14 AWG CU or AL	4-14 AWG, CU or AL, Connector Plus .250 x .032 Quick Connect, 3 Tabs
EB-421	2-14 AWG CU or AL	4-14 AWG, CU or AL, Connector Plus .250 x .032 Quick Connect, 3 Tabs
EB-521	1/0-14 AWG CU or AL	4-14 AWG, CU or AL, Connector Plus .250 x .032 Quick Connect, 3 Tabs
EB-322	4-14 AWG CU or AL	4-14 AWG, CU or AL, Connector Plus .250 x .032 Quick Connect, 4 Tabs

Catalog Number	Line Connections	Load Connections
EB-422	2-14 AWG CU or AL	4-14 AWG, CU or AL, Connector Plus .250 x .032 Quick Connect, 4 Tabs
EB-522	1/0-14 AWG CU or AL	4-14 AWG, CU or AL, Connector Plus .250 x .032 Quick Connect, 4 Tabs
EB-423	2-14 AWG CU or AL	2-14 AWG, CU or AL, Connector
EB-523	1/0-14 AWG CU or AL	2-14 AWG, CU or AL, Connector
EB-424	2-14 AWG CU or AL	2-14 AWG, CU or AL, Connector Plus .250 x .032 Quick Connect, 2 Tabs
EB-524	1/0-14 AWG CU or AL	2-14 AWG, CU or AL, Connector Plus .250 x .032 Quick Connect, 2 Tabs
EB-425	2-14 AWG CU or AL	2-14 AWG, CU or AL, Connector Plus .250 x .032 Quick Connect, 3 Tabs
EB-525	1/0-14 AWG CU or AL	2-14 AWG, CU or AL, Connector Plus .250 x .032 Quick Connect, 3 Tabs
EB-527	1/0-14 AWG CU or AL	1/0-14 AWG, CU or AL, Connector
EB-528	1/0-14 AWG CU or AL	1/0-14 AWG, CU or AL, Connector Plus .250 x .032 Quick Connect, 2 Tabs
EB-529	1/0-14 AWG CU or AL	1/0-14 AWG, CU or AL, Connector Plus .250 x .032 Quick Connect, 3 Tabs

# ELEC-TRON, INC.

“Your Source with the Right Connections”



Catalog Number	Line Connections	Load Connections
EB-602	#10 Screw Terminal	.250 x .032 Quick Connect 2 Tabs
EB-603	#10 Screw Terminal	.250 x .032 Quick Connect 3 Tabs
EB-604	#10 Screw Terminal	.250 x .032 Quick Connect 4 Tabs
EB-605	#10 Screw Terminal	.250 x .032 Quick Connect 5 Tabs
EB-606	#10 Screw Terminal	.250 x .032 Quick Connect 6 Tabs
EB-607	#10 Screw Terminal	.250 x .032 Quick Connect 8 Tabs
EB-609	#10 Screw Terminal	#10 Screw Terminal Plus .250 x .032 Quick Connect 2 Tabs
EB-610	#10 Screw Terminal	#10 Screw Terminal Plus .250 x .032 Quick Connect 3 Tabs
EB-611	#10 Screw Terminal	#10 Screw Terminal Plus .250 x .032 Quick Connect 4 Tabs

Catalog Number	Line Connections	Load Connections
EB-80	#10 Screw Terminal	.250 x .032 Quick Connect 2 Tabs



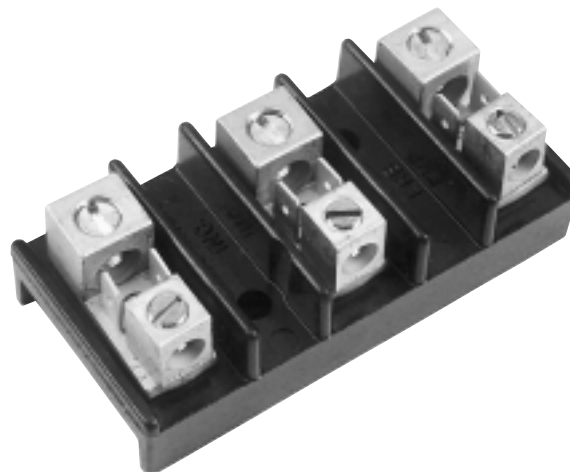
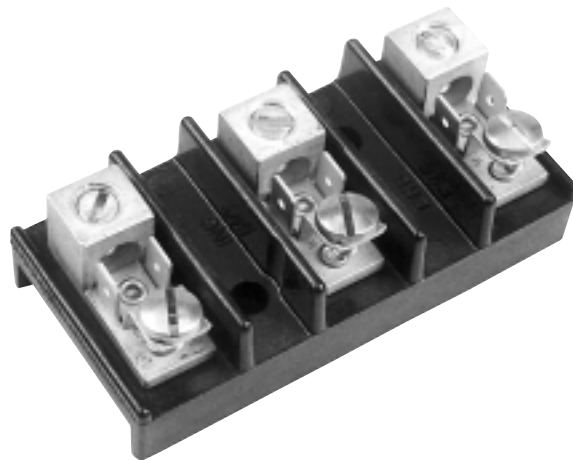
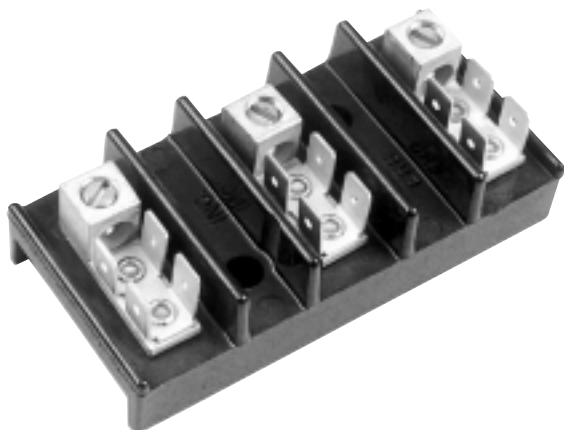
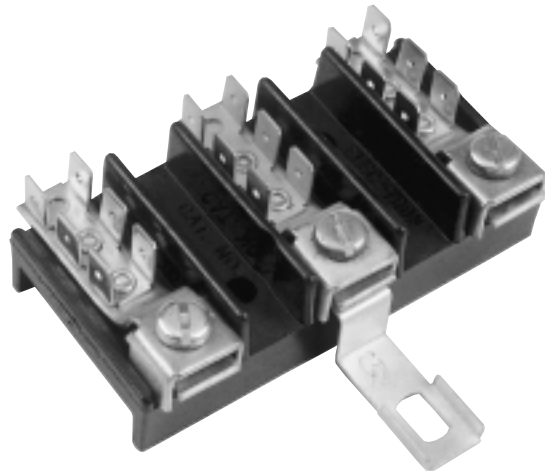
## **ERB Series**

### **Electric Range and General Purpose Power Entrance Blocks**

The ERB Series three-pole power terminal block offers the same wide selection of terminals and connectors as the EB Series.

Elec-Tron provides the ideal junction for field wiring with your internal circuits.

Available in entrance wire ranges of 6-8, 4-14, 2-14, and 0-14 AWG, and in 2- or 3-pole, these quick-connect terminals permit fast, efficient, economical branch circuit connections.

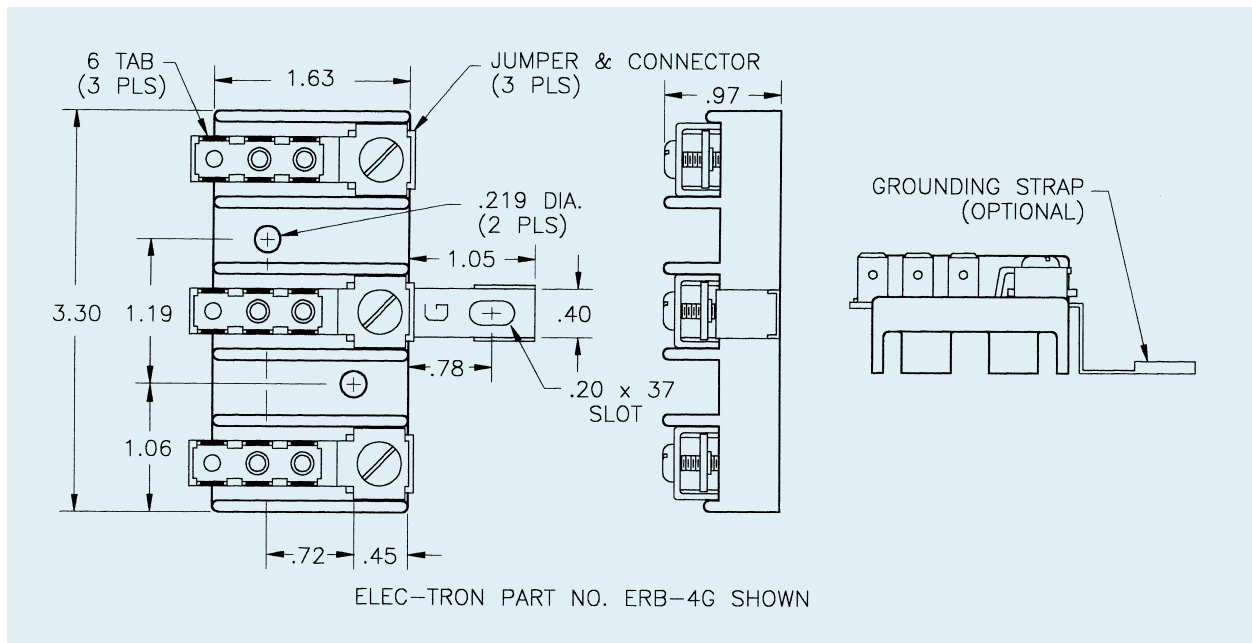




# ELEC-TRON, INC.

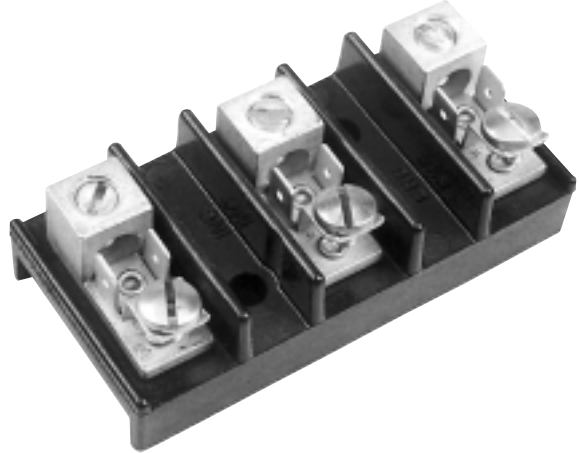
“Your Source with the Right Connections”

Notes: Quick connect tabs shown are .250 X .032. All models shown are available with or without the optional grounding strap. Addition of the suffix letter “G” to the catalog number designates addition of the grounding strap.



# ELEC-TRON, INC.

“Your Source with the Right Connections”



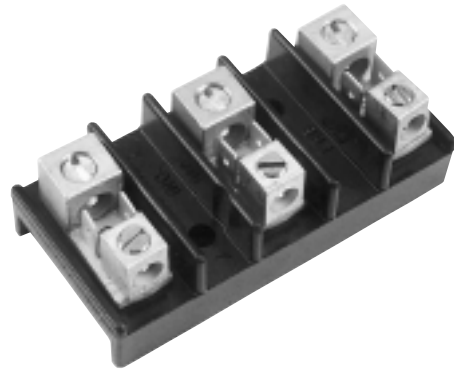
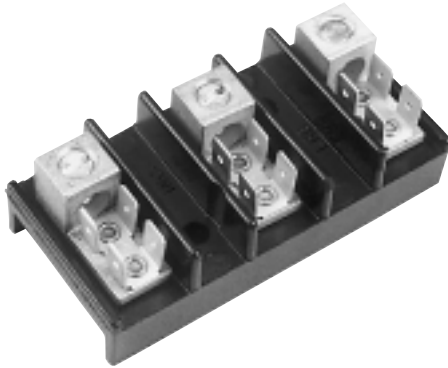
CATALOG NUMBER	LINE CONNECTIONS	LEFT	LOAD CONNECTIONS CENTER	RIGHT
ERB-1	#6-8 AWG CU	4 Q.C. TABS	4 Q.C. TABS	4 Q.C. TABS
ERB-1A	#6-8 AWG CU	4 Q.C. TABS	2 Q.C. TABS	4 Q.C. TABS
ERB-1C	#6-8 AWG CU	4 Q.C. TABS		4 Q.C. TABS
ERB-2	#6-8 AWG CU	5 Q.C. TABS	5 Q.C. TABS	5 Q.C. TABS
ERB-3	#6-8 AWG CU	5 Q.C. TABS	4 Q.C. TABS	5 Q.C. TABS
ERB-4	#6-8 AWG CU	6 Q.C. TABS	6 Q.C. TABS	6 Q.C. TABS
ERB-5	#6-8 AWG CU	6 Q.C. TABS	5 Q.C. TABS	6 Q.C. TABS
ERB-6	#6-8 AWG CU	6 Q.C. TABS	4 Q.C. TABS	6 Q.C. TABS
ERB-7	#6-8 AWG CU	4 Q.C. TABS	5 Q.C. TABS	4 Q.C. TABS
ERB-8	#6-8 AWG CU	4 Q.C. TABS	6 Q.C. TABS	4 Q.C. TABS
ERB-9	#6-8 AWG CU	5 Q.C. TABS	6 Q.C. TABS	5 Q.C. TABS
ERB-10	#6-8 AWG CU	2 Q.C. TABS	2 Q.C. TABS	2 Q.C. TABS
ERB-11	#6-8 AWG CU	2 Q.C. TABS #8 SCREW	2 Q.C. TABS #8 SCREW	2 Q.C. TABS #8 SCREW
ERB-12	#6-8 AWG CU	#10 SCREW	#10 SCREW	#10 SCREW
ERB-12T	#6-8 AWG CU	#10 SEMS	#10 SEMS	#10 SEMS

CATALOG NUMBER	LINE CONNECTIONS	LEFT	LOAD CONNECTIONS CENTER	RIGHT
ERB-36	#4-14 AWG CU or AL	2 Q.C. TABS #10 SCREW TAB	2 Q.C. TABS #10 SCREW TAB	2 Q.C. TABS #10 SCREW TAB
ERB-362	#4-14 AWG CU or AL	2 Q.C. TABS #10 SCREW TAB		2 Q.C. TABS #10 SCREW TAB
ERB-364	#4-14 AWG CU or AL	2 Q.C. TABS #10 SCREW TAB	2 Q.C. TABS #10 SCREW TAB	
ERB-46	#2-14 AWG CU or AL	2 Q.C. TABS #10 SCREW TAB	2 Q.C. TABS #10 SCREW TAB	2 Q.C. TABS #10 SCREW TAB
ERB-462	#2-14 AWG CU or AL	2 Q.C. TABS #10 SCREW TAB		2 Q.C. TABS #10 SCREW TAB
ERB-464	#2-14 AWG CU or AL	2 Q.C. TABS #10 SCREW TAB	2 Q.C. TABS #10 SCREW TAB	
ERB-56	#1/0-14 AWG CU or AL	2 Q.C. TABS #10 SCREW TAB	2 Q.C. TABS #10 SCREW TAB	2 Q.C. TABS #10 SCREW TAB
ERB-562	#1/0-14 AWG CU or AL	2 Q.C. TABS #10 SCREW TAB		2 Q.C. TABS #10 SCREW TAB
ERB-564	#1/0-14 AWG CU or AL	2 Q.C. TABS #10 SCREW TAB	2 Q.C. TABS #10 SCREW TAB	
ERB-38	#4-14 AWG CU or AL	3 Q.C. TABS #10 SCREW TAB	3 Q.C. TABS #10 SCREW TAB	3 Q.C. TABS #10 SCREW TAB
ERB-382	#4-14 AWG CU or AL	3 Q.C. TABS #10 SCREW TAB		3 Q.C. TABS #10 SCREW TAB
ERB-384	#4-14 AWG CU or AL	3 Q.C. TABS #10 SCREW TAB	3 Q.C. TABS #10 SCREW TAB	
ERB-48	#2-14 AWG CU or AL	3 Q.C. TABS #10 SCREW TAB	3 Q.C. TABS #10 SCREW TAB	3 Q.C. TABS #10 SCREW TAB
ERB-482	#2-14 AWG CU or AL	3 Q.C. TABS #10 SCREW TAB		3 Q.C. TABS #10 SCREW TAB
ERB-484	#2-14 AWG CU or AL	3 Q.C. TABS #10 SCREW TAB	3 Q.C. TABS #10 SCREW TAB	
ERB-58	#1/0-14 AWG CU or AL	3 Q.C. TABS #10 SCREW TAB	3 Q.C. TABS #10 SCREW TAB	3 Q.C. TABS #10 SCREW TAB
ERB-582	#1/0-14 AWG CU or AL	3 Q.C. TABS #10 SCREW TAB		3 Q.C. TABS #10 SCREW TAB
ERB-584	#1/0-14 AWG CU or AL	3 Q.C. TABS #10 SCREW TAB	3 Q.C. TABS #10 SCREW TAB	

• NO LINE CONNECTOR ON CENTER POLE    •• NO LINE CONNECTOR ON RIGHT POLE

# ELEC-TRON, INC.

“Your Source with the Right Connections”



CATALOG NUMBER	LINE CONNECTIONS	LEFT	LOAD CONNECTIONS CENTER	RIGHT
ERB-30	#4-14 AWG CU or AL	4 Q.C. TABS	4 Q.C. TABS	4 Q.C. TABS
ERB-302 •	#4-14 AWG CU or AL	4 Q.C. TABS		4 Q.C. TABS
ERB-304 ••	#4-14 AWG CU or AL	4 Q.C. TABS	4 Q.C. TABS	
ERB-31	#4-14 AWG CU or AL	5 Q.C. TABS	5 Q.C. TABS	5 Q.C. TABS
ERB-312 •	#4-14 AWG CU or AL	5 Q.C. TABS		5 Q.C. TABS
ERB-314 ••	#4-14 AWG CU or AL	5 Q.C. TABS	5 Q.C. TABS	
ERB-32	#4-14 AWG CU or AL	6 Q.C. TABS	6 Q.C. TABS	6 Q.C. TABS
ERB-322 •	#4-14 AWG CU or AL	6 Q.C. TABS		6 Q.C. TABS
ERB-324 ••	#4-14 AWG CU or AL	6 Q.C. TABS	6 Q.C. TABS	
ERB-33	#4-14 AWG CU or AL	6 Q.C. TABS	4 Q.C. TABS	6 Q.C. TABS
ERB-334	#4-14 AWG CU or AL	6 Q.C. TABS	4 Q.C. TABS	
ERB-35	#4-14 AWG CU or AL	5 Q.C. TABS	4 Q.C. TABS	5 Q.C. TABS
ERB-354 ••	#4-14 AWG CU or AL	5 Q.C. TABS	4 Q.C. TABS	
ERB-37	#4-14 AWG CU or AL	4 Q.C. TABS		4 Q.C. TABS
ERB-374 ••	#4-14 AWG CU or AL	4 Q.C. TABS		
ERB-40	#2-14 AWG CU or AL	4 Q.C. TABS	4 Q.C. TABS	4 Q.C. TABS
ERB-402 •	#2-14 AWG CU or AL	4 Q.C. TABS		4 Q.C. TABS
ERB-404 ••	#2-14 AWG CU or AL	4 Q.C. TABS	4 Q.C. TABS	
ERB-41	#2-14 AWG CU or AL	5 Q.C. TABS	5 Q.C. TABS	5 Q.C. TABS
ERB-412 •	#2-14 AWG CU or AL	5 Q.C. TABS		5 Q.C. TABS
ERB-414 ••	#2-14 AWG CU or AL	5 Q.C. TABS	5 Q.C. TABS	
ERB-42	#2-14 AWG CU or AL	6 Q.C. TABS	6 Q.C. TABS	6 Q.C. TABS
ERB-422 •	#2-14 AWG CU or AL	6 Q.C. TABS		6 Q.C. TABS
ERB-424 ••	#2-14 AWG CU or AL	6 Q.C. TABS	6 Q.C. TABS	
ERB-43	#2-14 AWG CU or AL	6 Q.C. TABS	4 Q.C. TABS	6 Q.C. TABS
ERB-434 ••	#2-14 AWG CU or AL	6 Q.C. TABS	4 Q.C. TABS	
ERB-45	#2-14 AWG CU or AL	5 Q.C. TABS	4 Q.C. TABS	5 Q.C. TABS
ERB-454 ••	#2-14 AWG CU or AL	5 Q.C. TABS	4 Q.C. TABS	
ERB-47	#2-14 AWG CU or AL	4 Q.C. TABS		4 Q.C. TABS
ERB-474 ••	#2-14 AWG CU or AL	4 Q.C. TABS		
ERB-50	#1/0-14 AWG CU or AL	4 Q.C. TABS	4 Q.C. TABS	4 Q.C. TABS
ERB-502 •	#1/0-14 AWG CU or AL	4 Q.C. TABS		4 Q.C. TABS
ERB-504 ••	#1/0-14 AWG CU or AL	4 Q.C. TABS	4 Q.C. TABS	
ERB-51	#1/0-14 AWG CU or AL	5 Q.C. TABS	5 Q.C. TABS	5 Q.C. TABS
ERB-512 •	#1/0-14 AWG CU or AL	5 Q.C. TABS		5 Q.C. TABS
ERB-514 ••	#1/0-14 AWG CU or AL	5 Q.C. TABS	5 Q.C. TABS	
ERB-52	#1/0-14 AWG CU or AL	6 Q.C. TABS	6 Q.C. TABS	6 Q.C. TABS
ERB-522 •	#1/0-14 AWG CU or AL	6 Q.C. TABS		6 Q.C. TABS
ERB-524 ••	#1/0-14 AWG CU or AL	6 Q.C. TABS	6 Q.C. TABS	
ERB-52D	#1/0-14 AWG CU or AL	6 Q.C. TABS	6 Q.C. TABS	6 Q.C. TABS
ERB-53	#1/0-14 AWG CU or AL	6 Q.C. TABS	4 Q.C. TABS	6 Q.C. TABS
ERB-534 ••	#1/0-14 AWG CU or AL	6 Q.C. TABS	4 Q.C. TABS	
ERB-53A	#1/0-14 AWG CU or AL	6 Q.C. TABS	2 Q.C. TABS	6 Q.C. TABS
ERB-55	#1/0-14 AWG CU or AL	5 Q.C. TABS	4 Q.C. TABS	5 Q.C. TABS
ERB-554	#1/0-14 AWG CU or AL	5 Q.C. TABS	4 Q.C. TABS	
ERB-57	#1/0-14 AWG CU or AL	4 Q.C. TABS		4 Q.C. TABS
ERB-574 ••	#1/0-14 AWG CU or AL	4 Q.C. TABS		

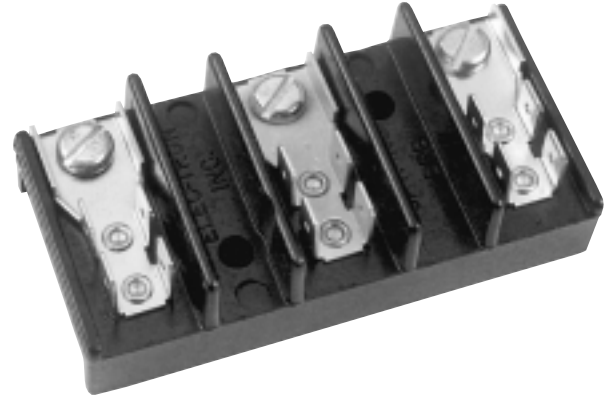
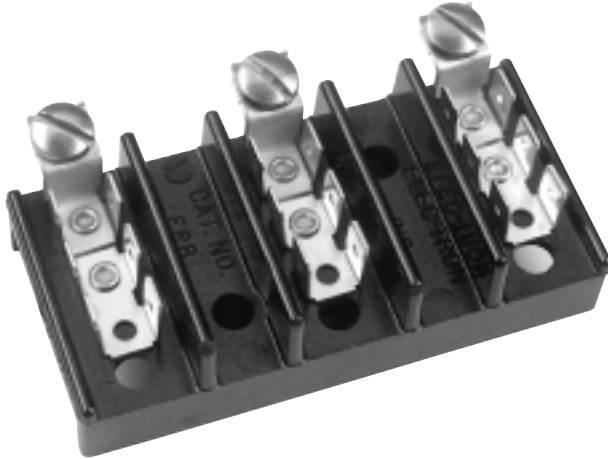
• NO LINE CONNECTOR ON CENTER POLE      •• NO LINE CONNECTOR ON RIGHT POLE

CATALOG NUMBER	LINE CONNECTIONS	LEFT	LOAD CONNECTIONS CENTER	RIGHT
ERB-34	#4-14 AWG CU or AL	2 Q.C. TABS #4-14 AWG CU or AL	2 Q.C. TABS #4-14 AWG CU or AL	2 Q.C. TABS #4-14 AWG CU or AL
ERB-342 •	#4-14 AWG CU or AL	2 Q.C. TABS #4-14 AWG CU or AL		2 Q.C. TABS #4-14 AWG CU or AL
ERB-344 ••	#4-14 AWG CU or AL	2 Q.C. TABS #4-14 AWG CU or AL	2 Q.C. TABS #4-14 AWG CU or AL	
ERB-34A	#4-14 AWG CU or AL	#4-14 AWG CU or AL	#4-14 AWG CU or AL	#4-14 AWG CU or AL
ERB-34B	#4-14 AWG CU or AL	2 Q.C. TABS #4-14 AWG CU or AL	#4-14 AWG CU or AL	2 Q.C. TABS #4-14 AWG CU or AL
ERB-34C	#4-14 AWG CU or AL	3 Q.C. TABS #4-14 AWG CU or AL	3 Q.C. TABS #4-14 AWG CU or AL	3 Q.C. TABS #4-14 AWG CU or AL
ERB-34E	#4-14 AWG CU or AL	2 Q.C. TABS #4-14 AWG CU or AL	6 Q.C. TABS	2 Q.C. TABS #4-14 AWG CU or AL
ERB-34H	#4-14 AWG CU or AL	4 Q.C. TABS #4-14 AWG CU or AL	4 Q.C. TABS #4-14 AWG CU or AL	4 Q.C. TABS #4-14 AWG CU or AL
ERB-34Y	#4-14 AWG CU or AL	2 Q.C. TABS #4-14 AWG CU or AL	4 Q.C. TABS #4-14 AWG CU or AL	4 Q.C. TABS #4-14 AWG CU or AL
ERB-39	#4-14 AWG CU or AL	#4-14 AWG CU or AL		#4-14 AWG CU or AL
ERB-394 ••	#4-14 AWG CU or AL	#4-14 AWG CU or AL		
ERB-44	#2-14 AWG CU or AL	2 Q.C. TABS #4-14 AWG CU or AL	2 Q.C. TABS #4-14 AWG CU or AL	2 Q.C. TABS #4-14 AWG CU or AL
ERB-442 •	#2-14 AWG CU or AL	2 Q.C. TABS #4-14 AWG CU or AL		2 Q.C. TABS #4-14 AWG CU or AL
ERB-444 ••	#2-14 AWG CU or AL	#4-14 AWG CU or AL	2 Q.C. TABS #4-14 AWG CU or AL	
ERB-44A	#2-14 AWG CU or AL	2 Q.C. TABS #4-14 AWG CU or AL	#4-14 AWG CU or AL	#4-14 AWG CU or AL
ERB-44B	#2-14 AWG CU or AL	2 Q.C. TABS #4-14 AWG CU or AL	#4-14 AWG CU or AL	2 Q.C. TABS #4-14 AWG CU or AL
ERB-44E	#2-14 AWG CU or AL	4 Q.C. TABS #4-14 AWG CU or AL	4 Q.C. TABS #4-14 AWG CU or AL	4 Q.C. TABS #4-14 AWG CU or AL
ERB-44X	#2-14 AWG CU or AL	4 Q.C. TABS #4-14 AWG CU or AL	4 Q.C. TABS #4-14 AWG CU or AL	2 Q.C. TABS #4-14 AWG CU or AL
ERB-44Y	#2-14 AWG CU or AL	2 Q.C. TABS #4-14 AWG CU or AL	4 Q.C. TABS #4-14 AWG CU or AL	4 Q.C. TABS #4-14 AWG CU or AL
ERB-49	#2-14 AWG CU or AL	#2-14 AWG CU or AL		#2-14 AWG CU or AL
ERB-494 ••	#2-14 AWG CU or AL	#2-14 AWG CU or AL		
ERB-54	#2-14 AWG CU or AL	2 Q.C. TABS #4-14 AWG CU or AL	2 Q.C. TABS #4-14 AWG CU or AL	2 Q.C. TABS #4-14 AWG CU or AL
ERB-542 •	#1/0-14 AWG CU or AL	2 Q.C. TABS #4-14 AWG CU or AL		2 Q.C. TABS #4-14 AWG CU or AL
ERB-544 ••	#1/0-14 AWG CU or AL	2 Q.C. TABS #4-14 AWG CU or AL	2 Q.C. TABS #4-14 AWG CU or AL	
ERB-59	#1/0-14 AWG CU or AL	#1/0-14 AWG CU or AL		#1/0-14 AWG CU or AL
ERB-594 ••	#1/0-14 AWG CU or AL	#1/0-14 AWG CU or AL		

• NO LINE CONNECTOR ON CENTER POLE      •• NO LINE CONNECTOR ON RIGHT POLE

# ELEC-TRON, INC.

“Your Source with the Right Connections”



CATALOG NUMBER	LINE CONNECTIONS	LOAD CONNECTIONS		
		LEFT	CENTER	RIGHT
ERB-60		6 Q.C. TABS	6 Q.C. TABS	6 Q.C. TABS
ERB-61		5 Q.C. TABS	5 Q.C. TABS	5 Q.C. TABS
ERB-62		8 Q.C. TABS	8 Q.C. TABS	8 Q.C. TABS
ERB-65	#10 SCREW	4 Q.C. TABS	4 Q.C. TABS	4 Q.C. TABS
ERB-68	#10 SCREW	6 Q.C. TABS	6 Q.C. TABS	6 Q.C. TABS
ERB-69	#8 SCREW	8 Q.C. TABS	8 Q.C. TABS	8 Q.C. TABS

CATALOG NUMBER	LINE CONNECTIONS	LOAD CONNECTIONS		
		LEFT	CENTER	RIGHT
ERB-80	#10-32 SCREW	4 Q.C. TABS	4 Q.C. TABS	4 Q.C. TABS



CATALOG NUMBER	LINE CONNECTIONS	LOAD CONNECTIONS		
		LEFT	CENTER	RIGHT
ERB-70		3 Q.C. TABS	3 Q.C. TABS	3 Q.C. TABS
ERB-71		4 Q.C. TABS	4 Q.C. TABS	4 Q.C. TABS
ERB-72		5 Q.C. TABS	8 Q.C. TABS	10 Q.C. TABS
ERB-73	#10 SCREW	8 Q.C. TABS	8 Q.C. TABS	8 Q.C. TABS
ERB-74		6 Q.C. TABS	5 Q.C. TABS	3 Q.C. TABS
ERB-74A	#10 SCREW	6 Q.C. TABS	6 Q.C. TABS	6 Q.C. TABS
ERB-75	#10 SCREW	8 Q.C. TABS	8 Q.C. TABS	8 Q.C. TABS
ERB-76	#10 SCREW	4 Q.C. TABS	8 Q.C. TABS	6 Q.C. TABS
ERB-79	#10 SCREW	8 Q.C. TABS	8 Q.C. TABS	8 Q.C. TABS

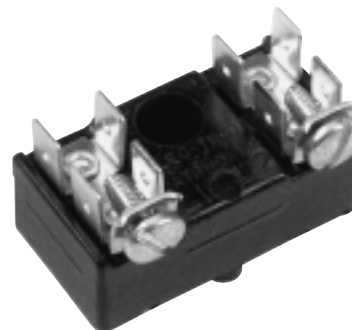
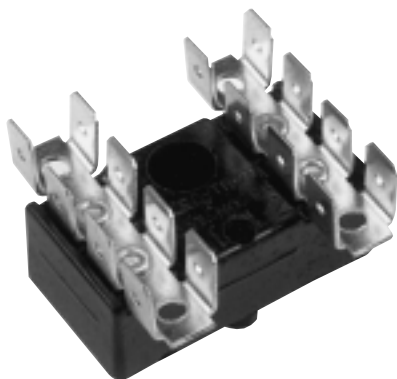
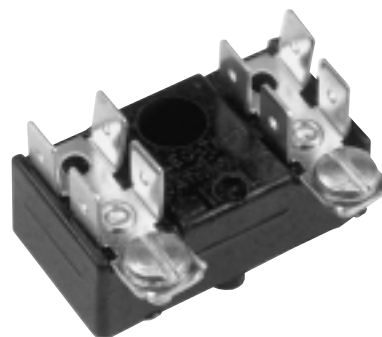
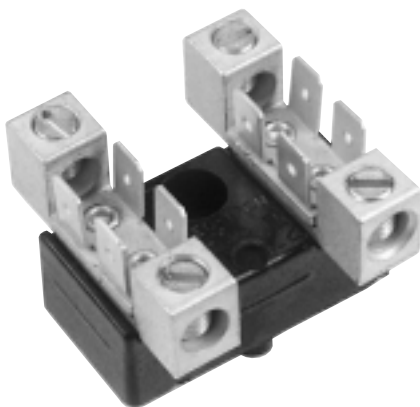
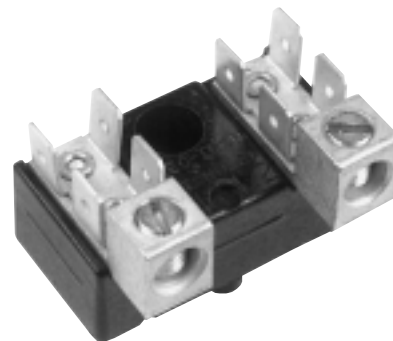
CATALOG NUMBER	LINE CONNECTIONS	LOAD CONNECTIONS		
		LEFT	CENTER	RIGHT
ERB-201	#2/0-14 AWG CU or AL	#2/0-14 AWG CU or AL	#2/0-14 AWG CU or AL	#2/0-14 AWG CU or AL

## **EK Series Terminal blocks**

The EK Series provides a compact, cost-efficient two-pole general purpose terminal block with over 50 connector options, ranging from multiple quick-connect tabs to pressure screw connectors for #4 AWG copper or aluminum conductors.

With over 50 terminal combinations, the EK Series has one just right for you.

A unique feature of this series is the single fastener mounting. A plastic pin provides anti-rotation.



# ELEC-TRON, INC.

## “Your Source with the Right Connections”

The EK Series has a wide range of applications. For use as a power entrance block, the EK Series can be supplied with pressure screw connectors for up to #4 AWG copper or aluminum conductors, or with several styles of binding head screw wiring terminals, including vertical or horizontal format.

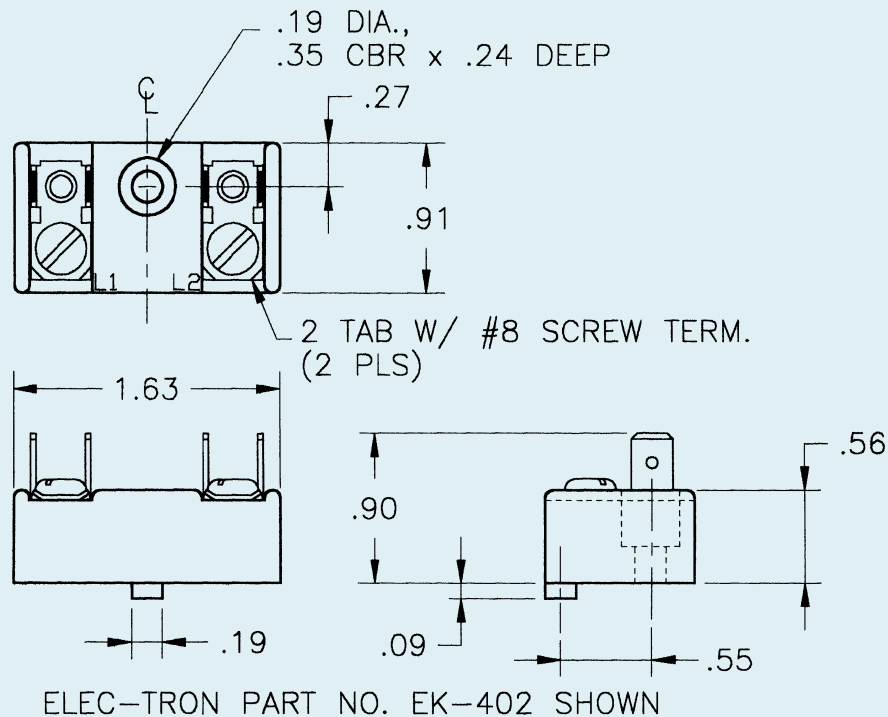
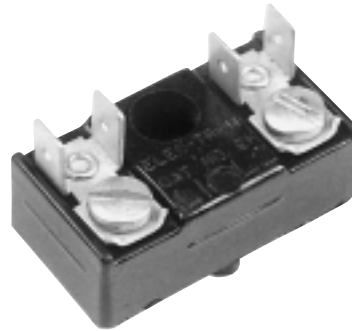
A special feature of the EK Series is the wide range of options available in the secondary or load connections. These options permit product engineers to custom design a terminal block that exactly fits each secondary conductor coming into the terminal block.

These load terminals include up to eight quick-connect tabs, binding head screw terminals and pressure screw connectors, as well as combinations of these connectors and terminals.

All models come equipped with the terminal identification “L1” and “L2” molded into the blocks. Additionally, special printing may be supplied as an extra cost option.

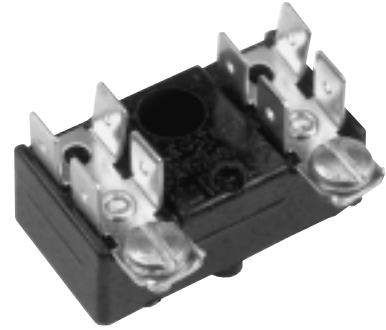
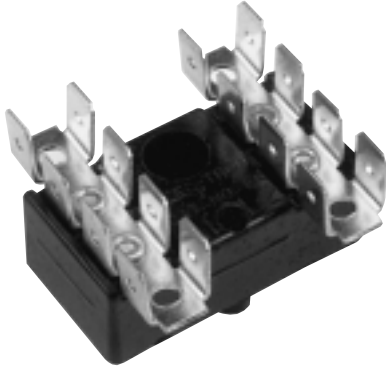
The EK Series requires two mounting holes in the mounting panel, but only one fastener. A clearance hole for the .188” diameter anti-rotation pin on the block is required, located .547” from the mounting hole for the fastener, which may be a screw or a rivet. A counterbored .191” diameter fastener hole is provided.

All EK Series blocks are U.L. and C.S.A. listed for 300 volts max. and carry a temperature rating of 150°C. The amperage rating varies with the type of terminal connectors supplied.



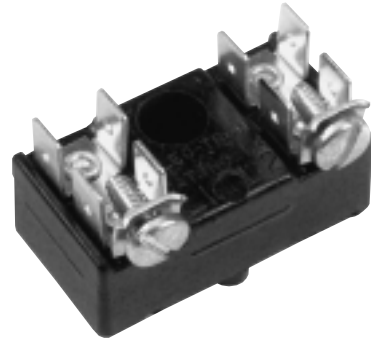
# ELEC-TRON, INC.

“Your Source with the Right Connections”



Catalog Number	.250 x .032 Quick Connect	
	L 1	L 2
EK- 102	2 Tabs	2 Tabs
EK-103	3 Tabs	3 Tabs
EK-104	4 Tabs	4 Tabs
EK-105	5 Tabs	5 Tabs
EK-106	6 Tabs	6 Tabs
EK-108	8 Tabs	8 Tabs
EK-109	3 Tabs	4 Tabs
EK-110	3 Tabs	5 Tabs
EK-111	3 Tabs	6 Tabs
EK-112	3 Tabs	8 Tabs
EK-113	4 Tabs	5 Tabs
EK-114	4 Tabs	6 Tabs
EK-115	4 Tabs	8 Tabs
EK-116	5 Tabs	6 Tabs
EK-117	5 Tabs	8 Tabs
EK-118	6 Tabs	8 Tabs

Catalog Number	.250 x .032 Quick Connect	
	L 1	L 2
EK- 202	#8 Screw Terminal	.250 x .032 Quick Connect 2 Tabs
EK-203	#8 Screw Terminal	.250 x .032 Quick Connect 3 Tabs
EK-204	#8 Screw Terminal	.250 x .032 Quick Connect 4 Tabs
EK-205	#8 Screw Terminal	.250 x .032 Quick Connect 5 Tabs
EK-206	#8 Screw Terminal	.250 x .032 Quick Connect 6 Tabs

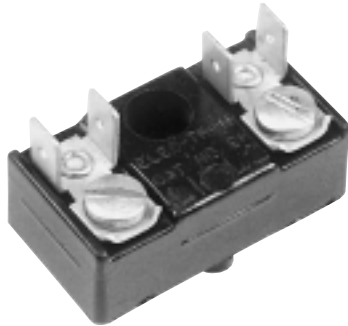


Catalog Number	.250 x .032 Quick Connect	
	L 1	L 2
EK- 302	#8 Screw Terminal	.250 x .032 Quick Connect 2 Tabs
EK-303	#8 Screw Terminal	.250 x .032 Quick Connect 3 Tabs
EK-304	#8 Screw Terminal	.250 x .032 Quick Connect 4 Tabs
EK-305	#8 Screw Terminal	.250 x .032 Quick Connect 5 Tabs
EK-306	#8 Screw Terminal	.250 x .032 Quick Connect 6 Tabs

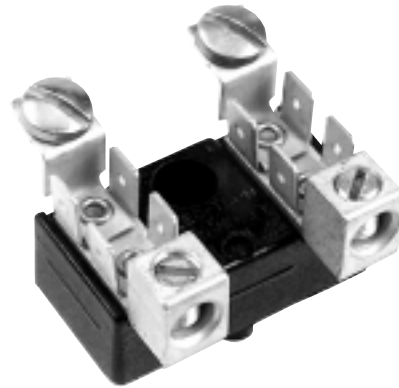


# ELEC-TRON, INC.

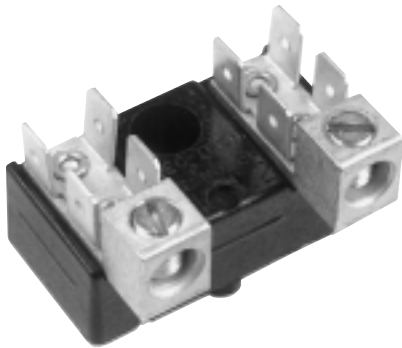
“Your Source with the Right Connections”



Catalog Number	.250 x .032 Quick Connect	
	L 1	L 2
EK-402	#8 Screw Terminal	.250 x .032 Quick Connect 2 Tabs
EK-403	#8 Screw Terminal	.250 x .032 Quick Connect 3 Tabs
EK-404	#8 Screw Terminal	.250 x .032 Quick Connect 4 Tabs



Catalog Number	.250 x .032 Quick Connect	
	L 1	L 2
EK-600	#4-14 AWG CU or AL	#10 Screw Terminal
EK-602	#4-14 AWG CU or AL	#10 Screw Terminal Plus .250 x .032 Quick Connect 2 Tabs
EK-603	#4-14 AWG CU or AL	#10 Screw Terminal Plus .250 x .032 Quick Connect 3 Tabs
EK-604	#4-14 AWG CU or AL	#10 Screw Terminal Plus .250 x .032 Quick Connect 4 Tabs



Catalog Number	.250 x .032 Quick Connect	
	L 1	L 2
EK-502	#4-14 AWG CU or AL	.250 x .032 Quick Connect 2 Tabs
EK-503	#4-14 AWG CU or AL	.250 x .032 Quick Connect 3 Tabs
EK-504	#4-14 AWG CU or AL	.250 x .032 Quick Connect 4 Tabs
EK-505	#4-14 AWG CU or AL	.250 x .032 Quick Connect 5 Tabs
EK-506	#4-14 AWG CU or AL	.250 x .032 Quick Connect 6 Tabs



Catalog Number	.250 x .032 Quick Connect	
	L 1	L 2
EK-700	#4-14 AWG CU or AL	#4-14 AWG CU or AL Connector
EK-702	#4-14 AWG CU or AL	#4-14 AWG CU or AL Connector Plus .250 x .032 Quick Connect, 2 Tabs
EK-703	#4-14 AWG CU or AL	#4-14 AWG CU or AL Connector Plus .250 x .032 Quick Connect, 3 Tabs
EK-704	#4-14 AWG CU or AL	#4-14 AWG CU or AL Connector Plus .250 x .032 Quick Connect, 4 Tabs

## **ED Series Power Terminal Blocks**

The ED Series is a compact, economical and heavy duty solution for connecting incoming power to internal factory wiring.

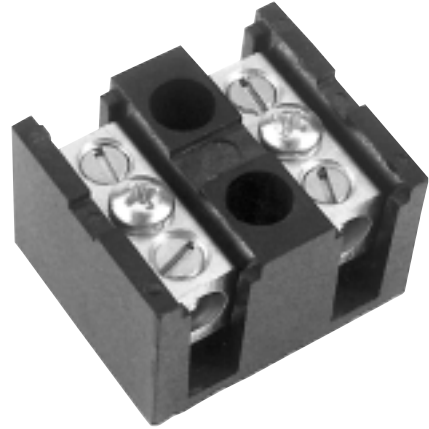
A superior splice block, this 2- or 3-pole power junction series is ideal for electric furnaces, duct heaters, heat pumps, commercial cooking equipment, electric water heaters and other applications.

Rating: 600 volts, #2 to #14 AWG copper or aluminum conductors, 150°C continuous duty.

Base: special electrical grade molded phenolic, U.L. rated 94V-0, 150°C.

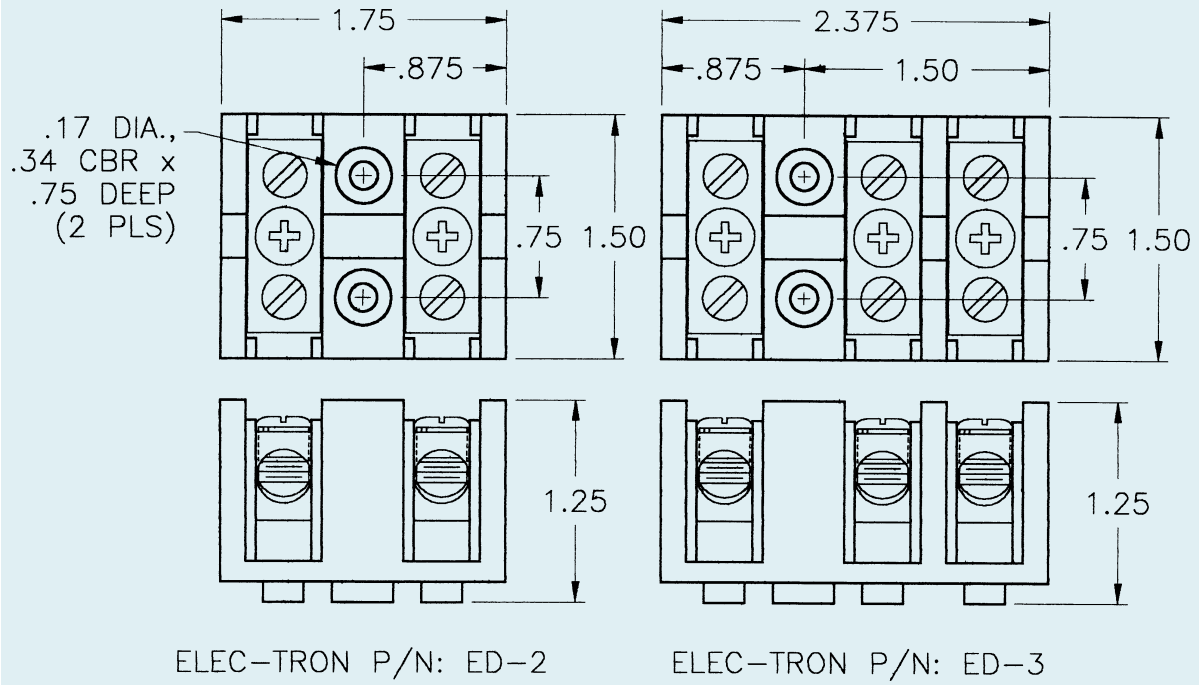
Extra heavy sections and recessed mounting fasteners provide safety and reliability.

Connectors are of a single piece construction, eliminating any mechanical-electrical joints and potential “hot spots”.



# ELEC-TRON, INC.

“Your Source with the Right Connections”



## **EJ Series Power Block**

The EJ Series is a “threaded stud” type power block, ideally suited for a power entrance block or internal junction block for electric ranges, electric clothes dryers and similar applications.

This substantially improved terminal block is available at considerable cost savings over conventional models.

The EJ Series two and three post stud and nut type power entrance blocks are available with an optional built-in grounding strap.

Three important features have been designed into the EJ Series of Terminal Blocks.

The blocks are substantially stronger than conventional stud and nut blocks. Extensive investment in modeling and stress technology have resulted in a block that offers a 39% increase in break and crack resistance.

The optional integral ground strap results in reduced assembly time and lower unit cost.

The blocks cost 19% to 21% less than conventional stud and nut blocks.

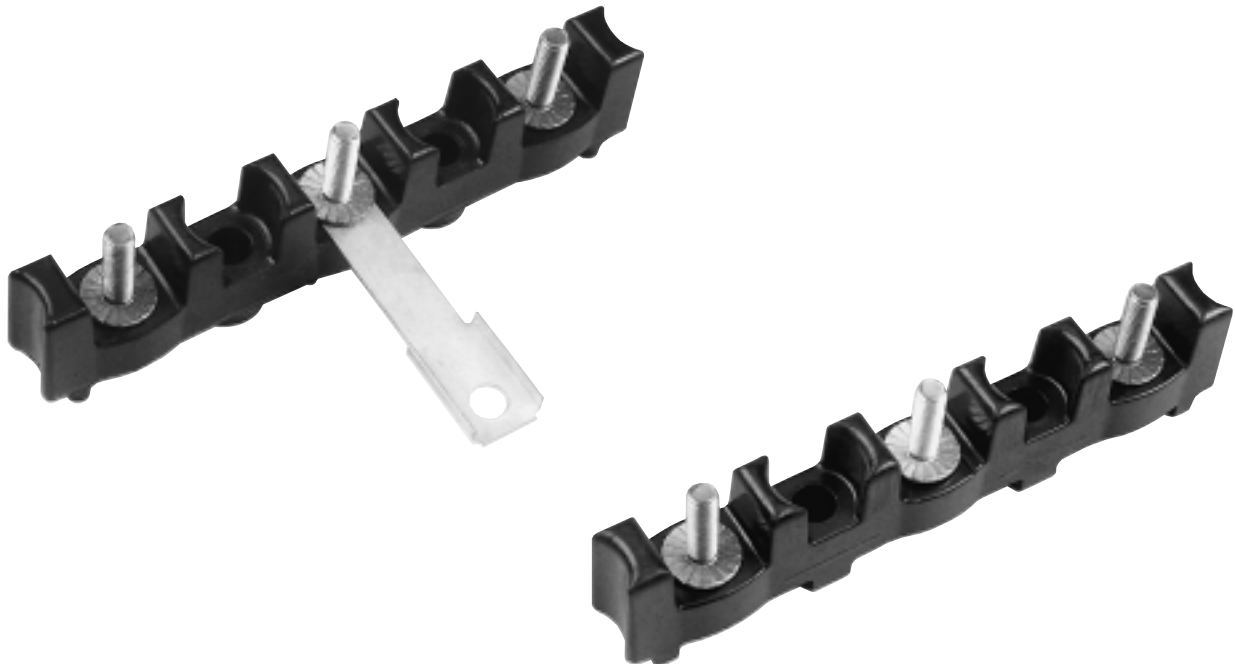
EJ Series blocks offer a convenient two or three pole junction point for connection of factory wiring to field installed cordsets.

Factory connection to these blocks is via factory applied ring terminals. These terminals are then secured with a nut.

Field installation is also via ring terminals. Equipment installers secure a separately purchased cordset to the screw posts with factory supplied nuts.

EJ Series terminal blocks are U.L. recognized under File Number E61937 and C.S.A. certified under LR47902 for applications up to 300 Volts, 60 amps, and 150°C.

The EJ Series is completely interchangeable with other three posted stud and nut terminal blocks.



# ELEC-TRON, INC.

“Your Source with the Right Connections”

