

TERMINAL FUSE BLOCKS

TFB Series

Terminal Fuse

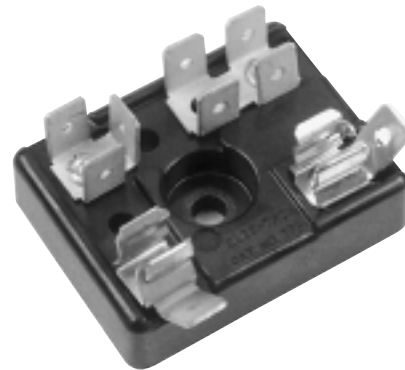
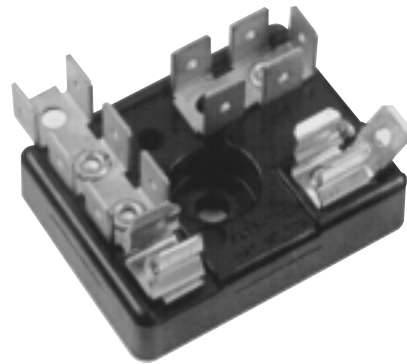
Blocks

Elec-Tron's TFB Series terminal block is unique in combining quick-connect terminals with standard 1/4" fuse holders on a single block.

The molded phenolic block includes optional internal junctions of the fuse with multiple quick-connect tabs, for substantial cost and spacing savings in your product.

If you require 1/4" x 1-1/4" fuses and other internal wiring junctions, one of the TFB models will be just right for you.

This model features single fastener mounting, with anti-rotation provided by a .19" diameter plastic pin.



ELEC-TRON, INC.

“Your Source with the Right Connections”

The TFB series is available in two basic formats: with or without fuseholders.

FUSE BLOCK MODELS

The fuseholder models bring a new concept to the industry, combining a fuse block with a terminal block in one component.

TERMINAL BLOCK MODELS

The TFB series is also available as a straight terminal block, including a wide range of quick-connect terminal combinations.

In the combination fuse block-terminal block configuration, the TFB Series is ideal for microwave ovens and other small appliances with internal fusing. As a straight terminal block, the TFB series offers an ideal internal junction block for all appliance applications.

Most models are available with a choice of .031" X .250" or .020" X .188" male tabs, in plain brass or tin plated brass. The plated spring bronze fuse clips are sized for 1/4" by 1-1/4" fuses.

Fuse clips with a single quick-connect tab are of one piece construction, and all others are riveted directly to the combination quick-connects, not through the phenolic block.

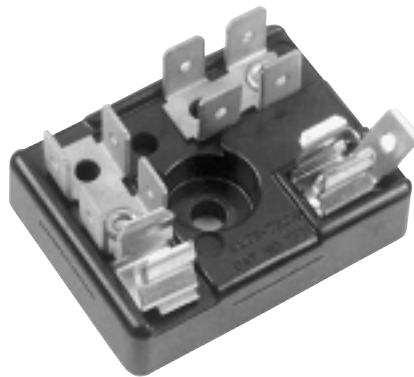
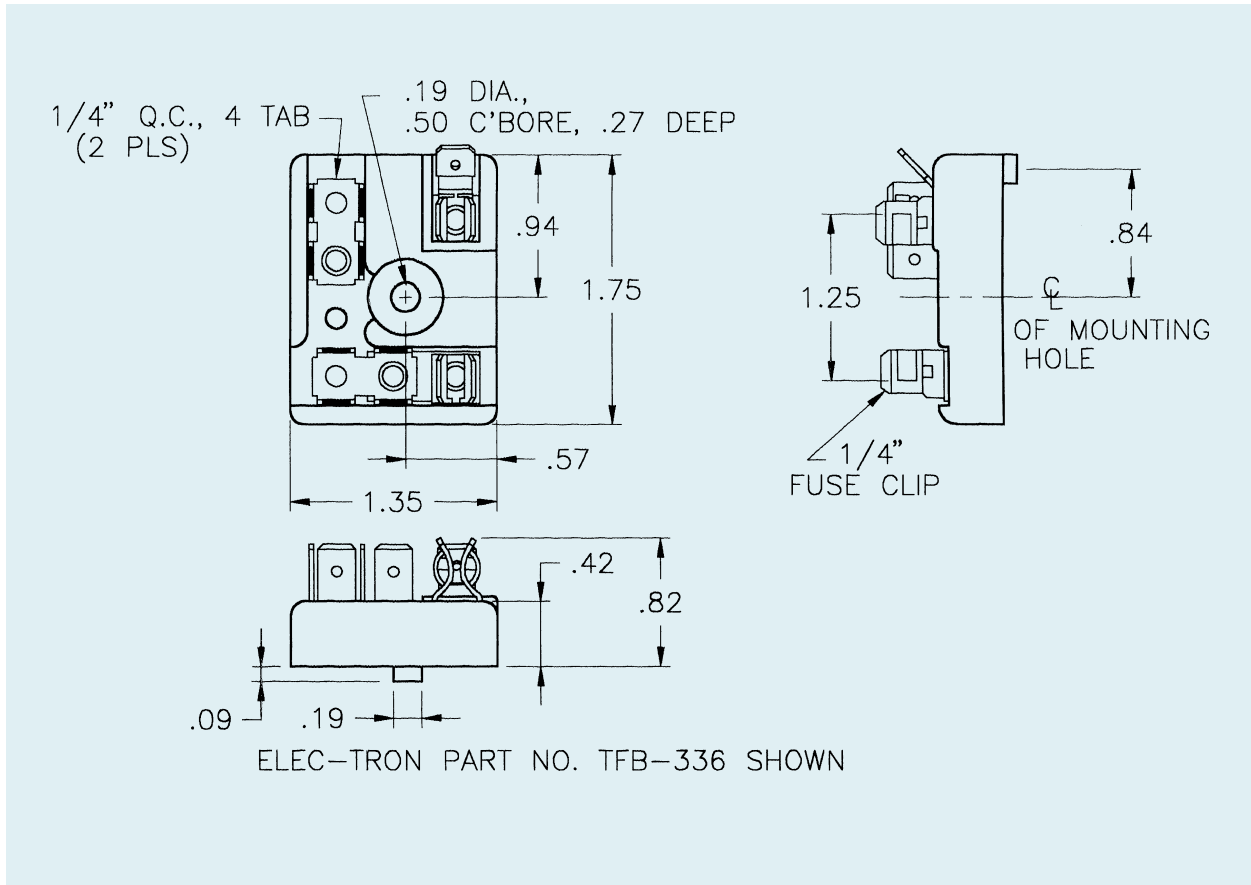
Electrical rating: 120 volts, 20 amps

Special terminal identification markings are available as an extra cost option.



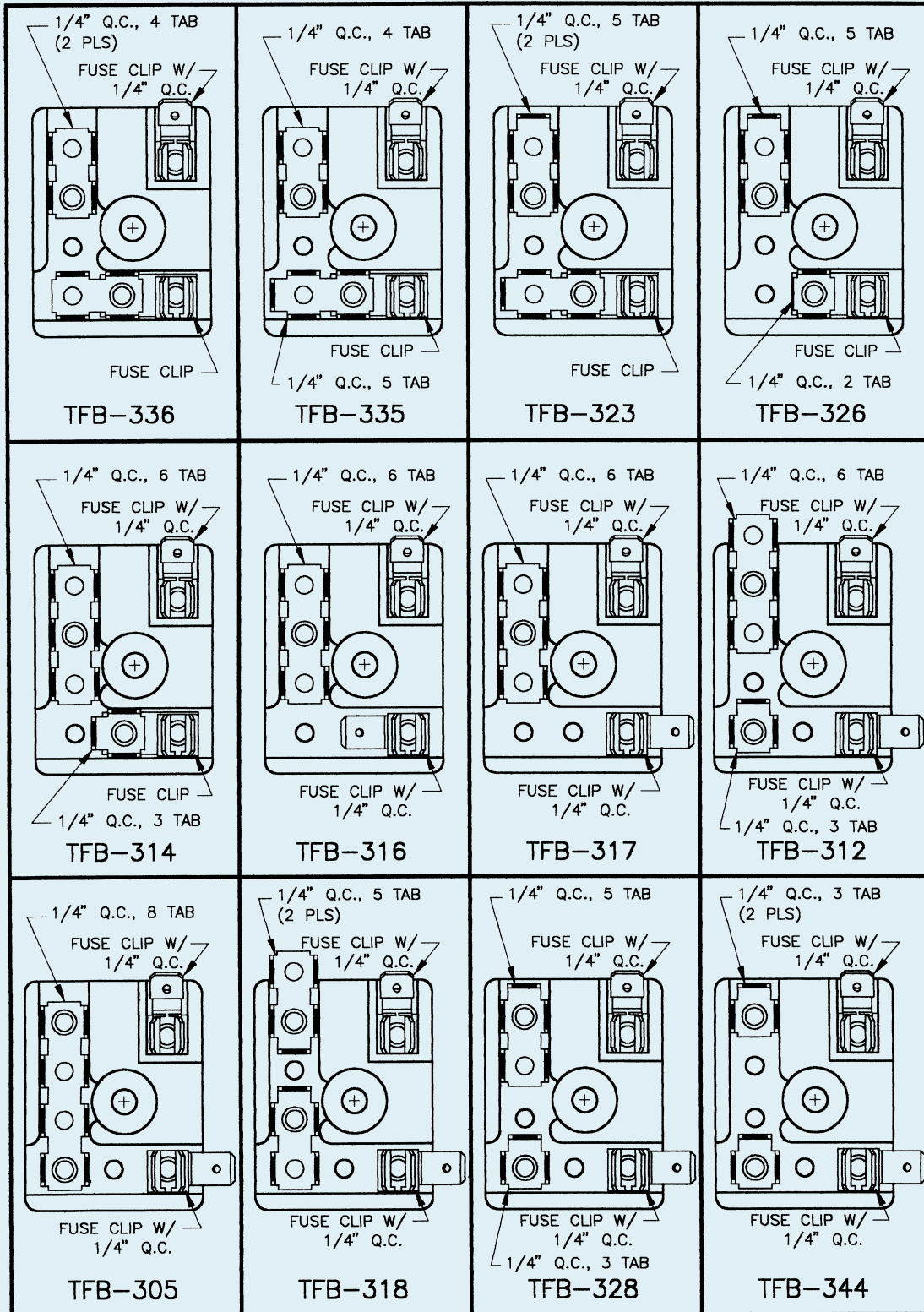
ELEC-TRON, INC.

“Your Source with the Right Connections”



ELEC-TRON, INC.

“Your Source with the Right Connections”



ELEC-TRON, INC.

“Your Source with the Right Connections”

