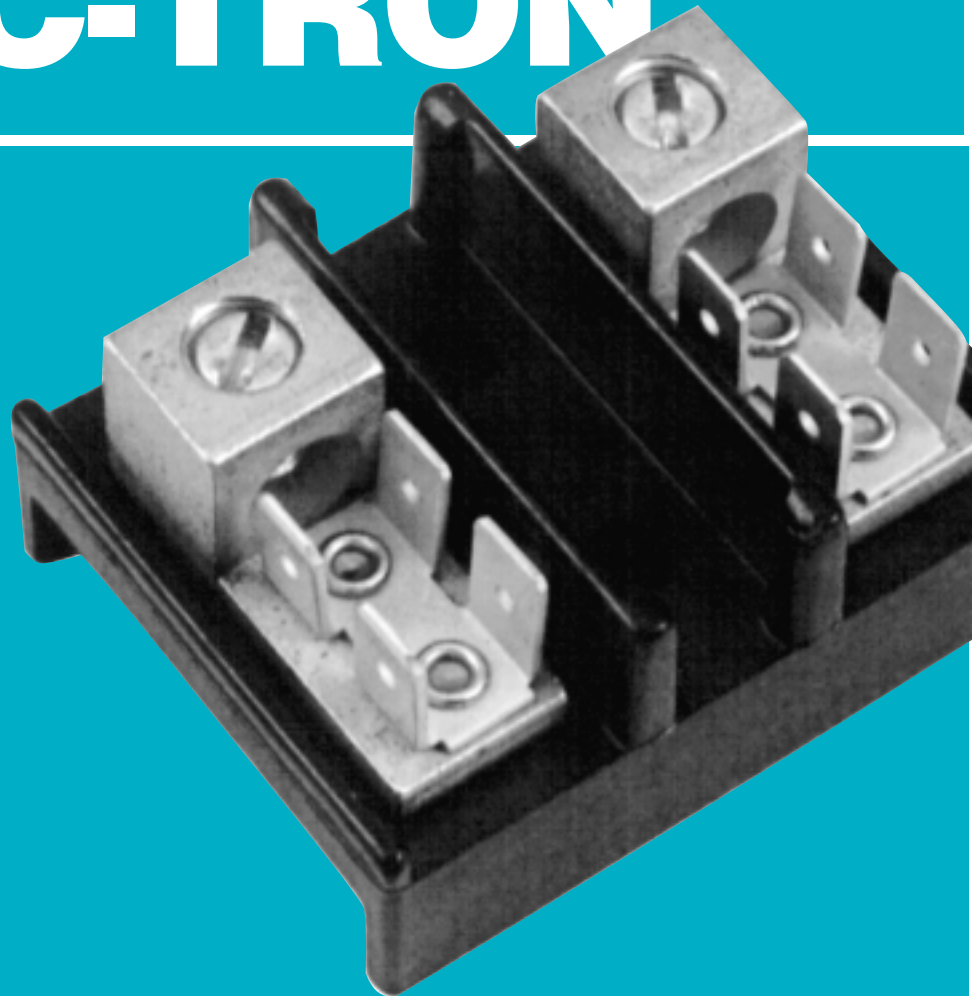
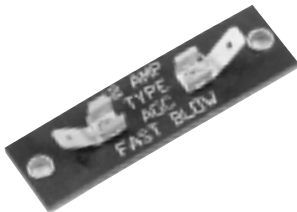
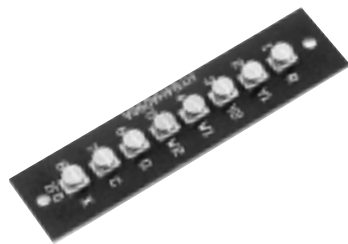
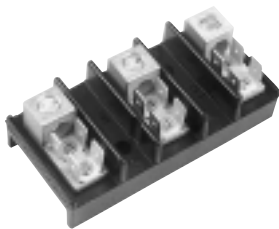
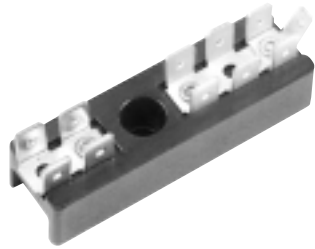


ELEC-TRON



- ▶ **TERMINAL BLOCKS**
- ▶ **TERMINAL BOARDS**
- ▶ **FUSE PANELS**

FOR THE MANUFACTURER

ELEC-TRON
inc.

"YOUR SOURCE WITH THE RIGHT CONNECTIONS"

2050 Northern / Wichita, KS 67216 USA

(316) 522-3401

Fax (316) 524-6767

TABLE OF CONTENTS

| | |
|--|----|
| Elec-Tron’s promise | 2 |
| A bit of history | 3 |
| Jim Beddow | 4 |
| A shop tour | 5 |
| Wire connection methods | 6 |
| Materials | 7 |
| Overview of terminal blocks | 9 |
| Overview of terminal boards and fuse panels .. | 10 |
| Overview of component boards | 13 |
| Custom and special designs | 14 |

**INTERNAL WIRING
 JUNCTION BLOCKS**

| | |
|------------------------|----|
| ESB1 | 16 |
| ESB2 | 20 |
| EL | 24 |
| ELD | 27 |
| EL, ELD markings | 30 |

POWER TERMINAL BLOCKS

| | |
|-----------|----|
| EB | 32 |
| ERB | 38 |
| EK | 43 |
| ED | 47 |
| EJ | 49 |

TERMINAL FUSE BLOCKS

| | |
|-----------|----|
| TFB | 52 |
|-----------|----|

INSULATED TERMINAL BLOCKS

| | |
|------------|----|
| EE8 | 58 |
| EM12 | 62 |
| EE16 | 66 |
| EF | 70 |

CONTROL CIRCUIT BLOCKS

| | |
|----------|----|
| ET | 72 |
|----------|----|

FEED-THRU TERMINAL BOARDS

| | |
|-------------|----|
| EG | 78 |
| ES-36 | 79 |
| ES-43 | 80 |

**EPC PRINTED CIRCUIT
 INTERNAL TERMINAL BOARDS**

| | |
|--------------|----|
| ES-101 | 82 |
| ES106 | 83 |
| EI | 84 |

COMPONENT BOARDS

| | |
|--------------------------------------|----|
| Component assemblies | 86 |
| Multi-function terminal boards | 87 |

ELEC-TRON, INC.

“Your Source with the Right Connections”

Elec-Tron’s promise

Giving you the right connections is Elec-Tron’s only business, so our engineers work hard to provide the connections you want, in the space you have, and at prices you can afford.

Highly experienced engineers have assisted scores of customers in developing designs that substantially reduced material and assembly costs and/or solved difficult problems.

Standardized spacing, and mounting designs allowing more connections in less space, are the foundation of the most complete line of appliance terminal boards and blocks available — anywhere!

Because of the immense array of Elec-Tron product options, many applications can be satisfied without a tooling charge.

Stocked components allow almost off-the-shelf delivery.

Whether your application is in a wet, hot or corrosive environment, Elec-Tron engineers will provide you the quality connection that’s just right!

Elec-Tron connectors are in:

Ovens, ranges
Refrigerators
Freezers
Microwaves
Washers, dryers
Furnaces
Air conditioners
Thermostat connections
Food equipment
Commercial kitchen equipment
Vending machines
Office equipment
Computers
Copiers
Motor controls
Medical systems equipment
Material handling equipment
Automatic door openers
Bus & truck switch panels
Auto fuse panels
Recreational vehicles
Farm machinery
Marine panels
and many, many other applications!

What is your application?

ELEC-TRON, INC.

“Your Source with the Right Connections”



Satisfying customers for more than 50 years

Elec-Tron, Inc. of Wichita, Kansas has grown into the appliance industry's leading source of electrical terminal blocks and terminal boards. The company's 72 employees celebrated Elec-Tron's 50th year in business in 1996.

Founded as Zimco Metal Products in April 1946, the company operated primarily as a contract manufacturer, producing miscellaneous metal stampings and assemblies.

In 1954 company founders R. C. Beddow and E. J. (Jim) Beddow elected to change the name of the firm to Elec-Tron, Inc., to more accurately reflect the nature of the products, primarily electrical switches, wiring harnesses, and terminal boards. The O. A. Sutton Corp., then the leading manufacturer of room air conditioners, was a steady customer for many years.

As Elec-Tron's reputation for quality and timely delivery grew, the company began serving most major appliance manufacturers in the U.S. and abroad.

When R. C. Beddow passed away in 1970, Jim Beddow was named President.

Molded terminal blocks joined terminal boards in 1975. This produced immediate results, so the company sold its switch products and focused solely on manufacturing connection products.

In January 1988 Jim Beddow retired from active day-to-day management of the company.



Rose Ann Rohleder was named President, with Lowell Wiebe continuing as Vice-President in charge of production and sales.

Today Elec-Tron serves every major appliance manufacturer.

How can Elec-Tron serve you?

Jim Beddow, grandfather of the terminal board

Reflecting on his several decades experience, Jim Beddow noted a number of changes in the manufacture of appliances.

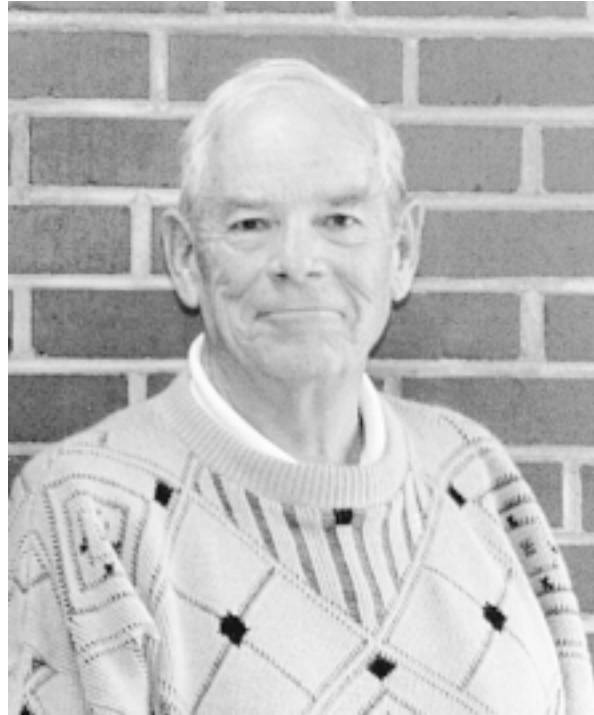
While products become more complex, the industry demands ever-increasing quality. Elec-Tron follows industry trends, such as the move toward more solid state components, and responds with new products.

“One thing is certain. There will always be changes in this industry. Our challenge is to continue to provide the type of connectors that best fit these changes,” said Beddow.

Elec-Tron’s job is to provide the right connections to those responsible for manufacturing products that are more compact, higher quality, and more complex.

“Many manufacturers incorporate connectors into their prefabricated wiring harness assemblies. These changes, along with increasingly complex electrical circuitry, require a supplier able to provide the most efficient solutions. Elec-Tron is dedicated to being that supplier,” said Beddow.

“Elec-Tron is known in the industry for its customer service, and we continue that service,” said Beddow. “Thanks to our production quality, innovative technology, and service, Elec-Tron has been named an Outstanding Supplier many times.”



1922 - 1996

ELEC-TRON, INC.

“Your Source with the Right Connections”



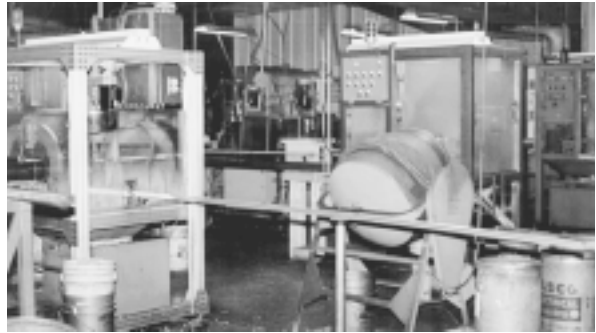
Engineering



Inventory



Punch press area



Connector area



Tooling



Quality control



Assembly



Administrative

Wire Connection Methods

Quick Connect Terminals

Quick-connect tabs are a one-piece construction, available in both .250" and .188" sizes. Single, double and triple quick-connects are available.

Screw terminals

Screw terminals are offered with or without wire retaining ears. Combinations of quick-connect tabs and screw terminals meet 80% of appliance design requirements, at a substantial saving. More than a thousand different terminal arrangements are U.L. component recognized and ready for your application.



Bifurcated soldering terminals

Although most applications for terminal boards and terminal blocks involve quick-connect or screw terminals, some require soldered connections. With the introduction of small solid state components into wiring circuits, the number of soldered connections has increased dramatically.

Usually, the small resistors, diodes, varistors, and other components are soldered directly to a terminal board or terminal block, which then provides the mounting base and wiring connections to the solid state components.

Elec-Tron's unique line of specialized terminals combine superior soldering terminals with quick-connect tabs — in a single piece board or block. All terminals are available as standard components on all Elec-Tron terminal boards and terminal blocks.

The soldering lug portion of Elec-Tron's terminals is unique in that lead wires aren't inserted through small holes and wrapped to obtain proper junction.



The Elec-Tron bifurcated soldering terminals consist of a split tab, formed into a fork. The lead wires are simply laid in the open fork, the fork is lightly squeezed and ready for soldering.

A particular advantage of this style is its ability to hold two or three lead wires as readily as a single wire.

An Elec-Tron bifurcated terminal meets or exceeds all U.L. requirements, including the requirement for mechanical security.

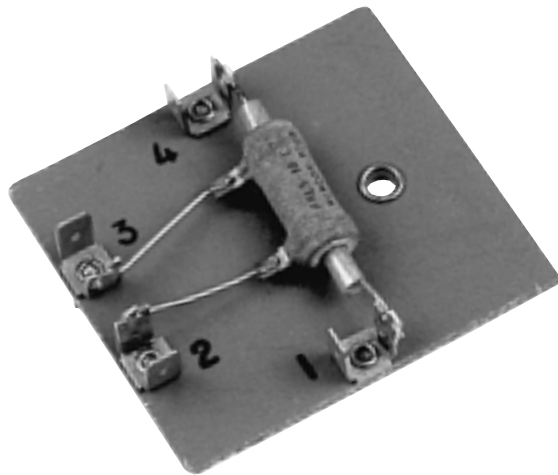
Materials

Mounting base

Frequently, a terminal board base may be extended to include mounting holes and space for the other electrical components that will be assembled later by the appliance manufacturer. This simple adaptation may permit the manufacturer to build up a complete electrical subassembly, efficiently, away from the final production line; it may provide a complete service replacement package, or, it may furnish a mounting base that eliminates the fabrication and installation of a separate base.

Relays, transformers and circuit breakers are common components that may be provided for in the design of your terminal boards.

Elec-Tron stocks all component parts. This provides control over delivery, price and quality. This also provides flexibility for the designing engineer.

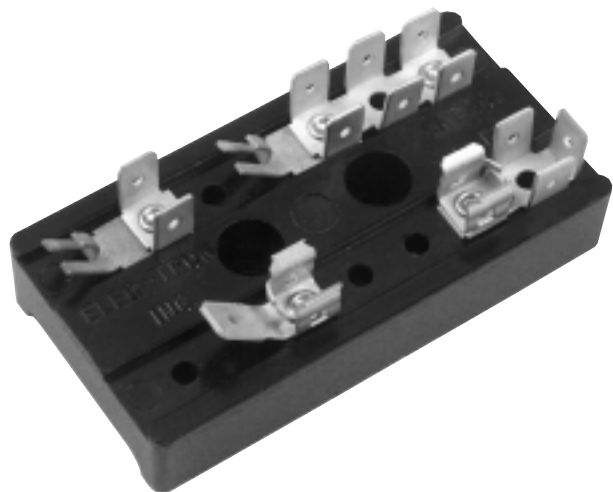
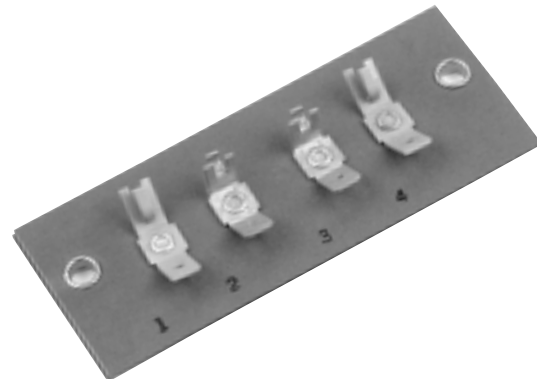


Terminal block/ board assemblies

The line of Elec-Tron bifurcated terminal combinations is designed to be mounted anywhere that the conventional quick-connect terminals are applied, to terminal boards or terminal blocks.

Most models include anti-rotation ears, permitting their application directly to laminated phenolic or glass polyester boards.

All models will fit interchangeably onto any of Elec-Tron's standard molded phenolic terminal blocks, including the ESB1, ESB2 and ET series.



ELEC-TRON, INC.

“Your Source with the Right Connections”

Solid State Components

With the advance in solid state technology in internal circuits, engineers are frequently faced with the problem of conveniently mounting devices such as resistors, thermal cutoffs, capacitors, chokes, varistors, and more.

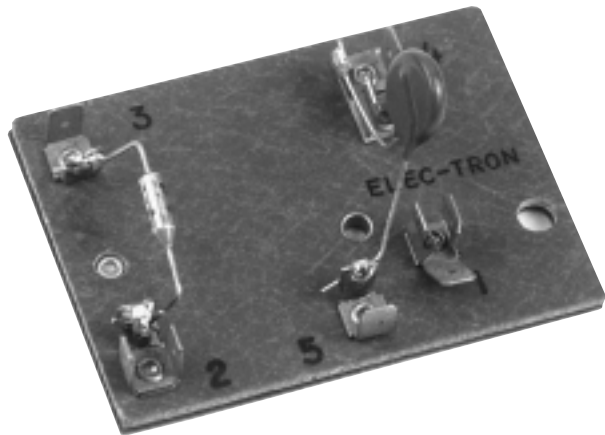
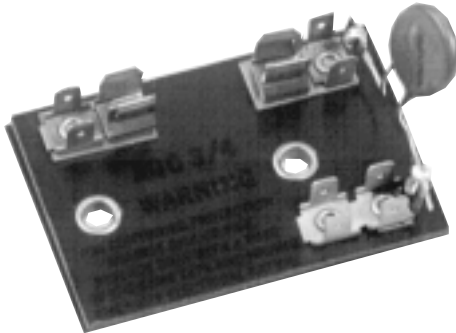
Elec-Tron is well prepared to assist you in the design of terminal boards that combine these components along with your wire junctioning needs.

In addition to supplying terminal boards and terminal blocks that include bifurcated terminals, Elec-Tron is well equipped to furnish complete assemblies, consisting of the terminal boards/blocks with customer specified solid state components preassembled.

Generally, it is economically advantageous to purchase complete assemblies. This reduces the number of individual parts that must be ordered and stocked, and Elec-Tron's specialized facilities and trained personnel will usually provide additional cost reductions.

Through careful preliminary design, it is frequently possible to combine several functions onto a single terminal board, resulting in significant cost and space savings, enhancing serviceability, and reducing noise levels.

Your best source for assistance in the development of such assemblies is Elec-Tron, Inc., where our engineers have been solving these problems for over four decades.



Overview of terminal blocks

Elec-Tron's molded terminal blocks may be ordered with nearly endless combinations of connectors and terminals.

Power Terminal Blocks

Elec-Tron's power entrance blocks are used in air conditioners, duct heaters, heat pumps, cooking equipment, electric water heaters, electric clothes dryers, electric furnaces, and a variety of other applications.

When you're seeking the ideal junction for field wiring with internal circuits, take a look at the more than 100 different combinations of terminal and connector arrangements offered by Elec-Tron.

A range of terminal variations make it possible to satisfy a variety of applications with standard molded bases.

Custom designed blocks, based on laminated sheet phenolic or glass polyester sheet, provide an economical alternative for all other requirements .

Elec-Tron produces power terminal blocks to fit nearly any application, including 600 volts and with connectors up to 500 MCM.

Elec-Tron's variety of low voltage terminal blocks is the most complete in the industry.



Overview of terminal boards

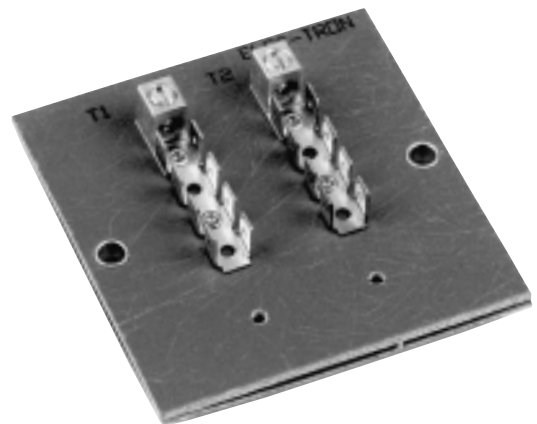
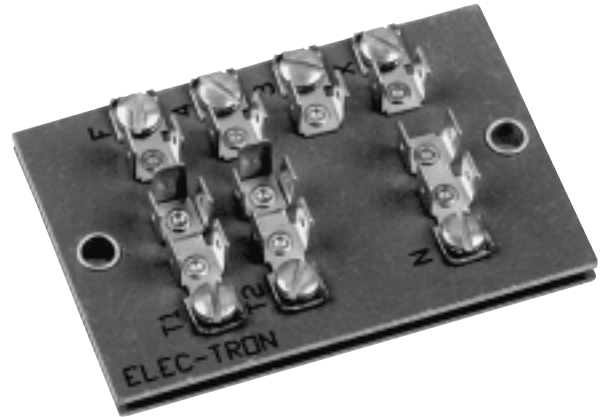
Elec-Tron is your complete source for standard or custom terminal boards.

Whether your need is for a single terminal, multiple terminals, quick-connect terminals, screw terminals or solder lugs, Elec-Tron produces an assembly to exactly match your requirements.

By providing an insulator between these connections, the field mechanic no longer has access to your fixed factory wiring. “Wire nuts” are eliminated, along with their potential for loose connections.

The field wiring screw terminals are offered in a vertical or horizontal style, with or without wire retaining ears; the factory wiring is available in 1/4” or 3/16” quick-connect tabs or solder lugs, in dual or single tabs.

As with all Elec-Tron boards, terminal identification may be on the board, and can be printed or steel stamped.

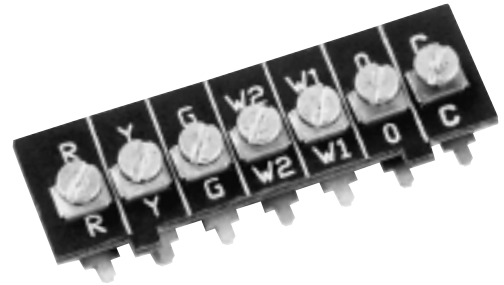


EPC Interconnect Boards

EPC Printed Circuit Interface terminal boards provide a central connection point for all field wiring terminations in solid state circuits based on printed circuit boards.

Field wiring connections are terminated on the front side of the board, while factory connections are made to the back side of the board.

Factory connections are not accessible to the field installer. The PC connector features two types of factory terminals, a wave solderable pin tab that locks into the PC board and a standard NEMA DC2, .032 X .250 male quick connect tab for wiring connections.



ELEC-TRON, INC.

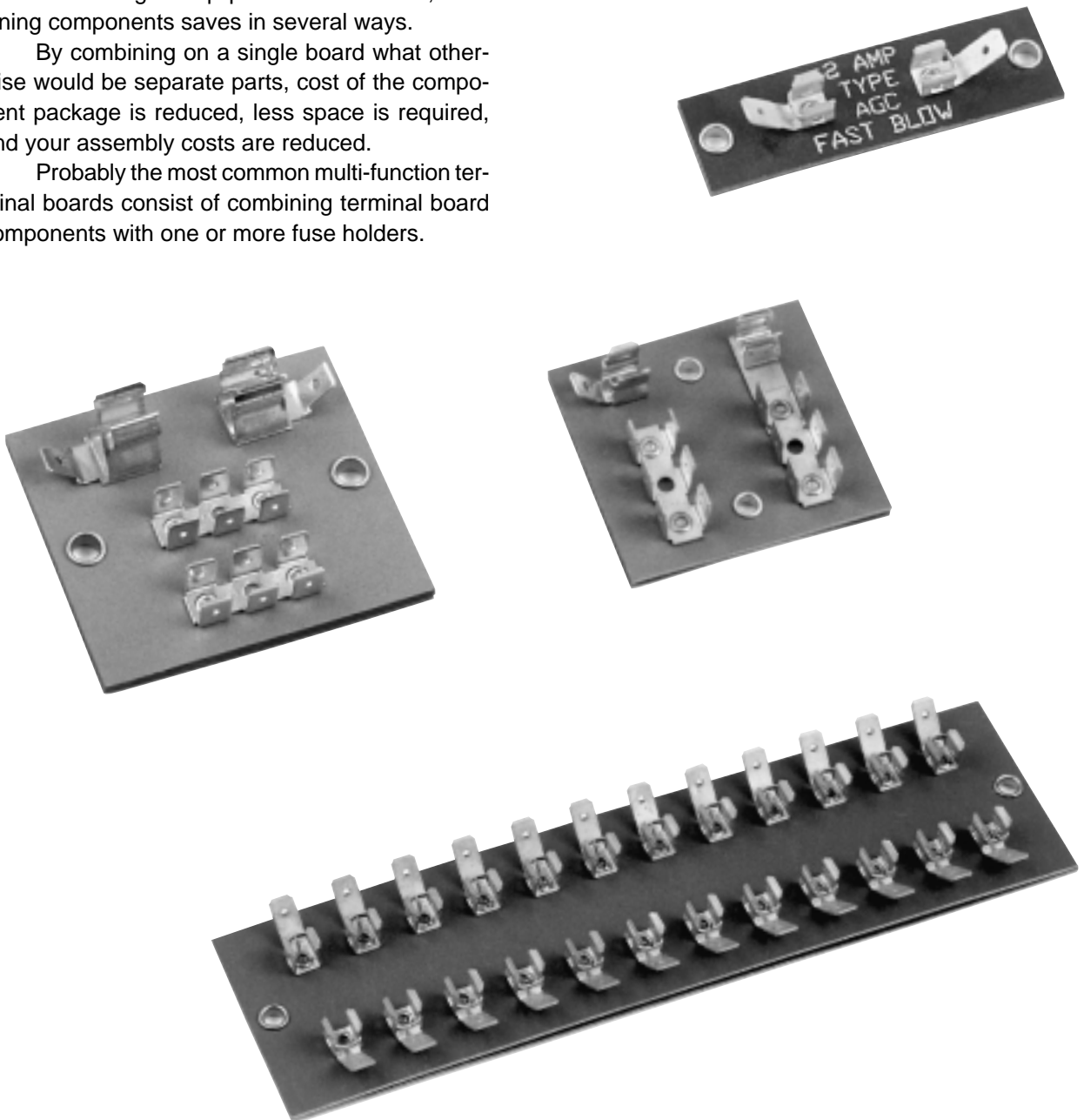
“Your Source with the Right Connections”

Fuse Panels

For the original equipment manufacturer, combining components saves in several ways.

By combining on a single board what otherwise would be separate parts, cost of the component package is reduced, less space is required, and your assembly costs are reduced.

Probably the most common multi-function terminal boards consist of combining terminal board components with one or more fuse holders.



Component assemblies

If your product requires diodes, chokes, capacitors, thermal cutoffs, resistors, rectifiers, fuses or other small components, Elec-Tron is equipped to deliver a complete assembly.

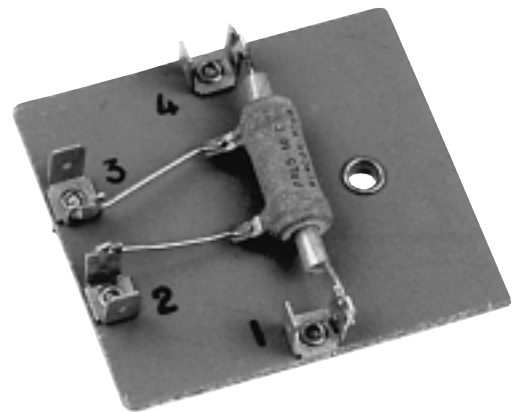
Combining components

Probably the most common multi-function terminal boards consist of combining terminal board components with one or more fuse holders. By combining on a single board what otherwise would be separate parts, cost of the component package is reduced, less space is required, and you avoid inventorying and assembling separate components.



Multi-Function Terminal Boards

Although terminal boards are generally thought of as simply a means of junctioning several wires, more and more engineers are designing boards that serve multiple functions, thereby reducing assembly effort, providing more accessible servicing, and eliminating noise.



Noise suppression

A most interesting side benefit gained by mounting certain devices on a terminal board is reduction of undesirable noises. Elec-Tron has assisted in the development of several products in which “transformer hum” and “relay chatter” have been virtually eliminated, simply by moving these components from sheet metal bases to a terminal board mounting.

Custom and special designs

Custom designed blocks, based on laminated sheet phenolic or glass polyester sheet, are an economical alternative for requirements not satisfied using standard molded bases.

Putting more parts on a single board helps you reduce parts ordering and stocking, and can make connections more accessible for servicing.

Laminated sheet phenolic permits custom designed boards to fit any need. Elec-Tron’s exclusive tooling process will give you this flexibility for much less than you would expect, usually for less than \$250!

Elec-Tron produces such internal junction blocks and power terminal blocks to fit nearly any application, including 600 volts and with connectors up to 500 MCM.

Elec-Tron’s vast array of standard terminals and connectors permits construction of custom designs to fit any special need.

